



# Simoco Pulse Telemetry Solutions

## Pulse Gateway



### Pulse Gateway

Simoco's Gateway products enable the SCADA master(s) to seamlessly interface with the digital radio infrastructure. This makes the radio infrastructure transparent to the SCADA application and requires no customisation or integration in order to deploy SCADA over radio. Systems can either be fully deployed over PMR or can be used to form part of mixed technology telemetry solutions.

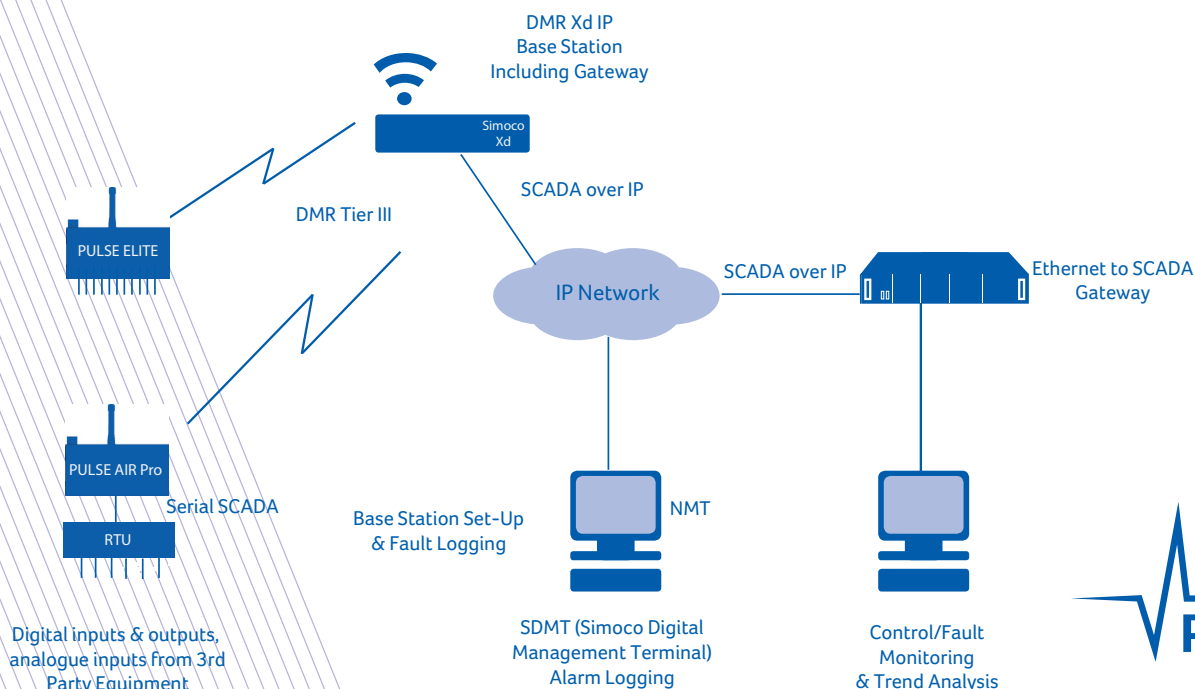
The Pulse Gateway converts serial Protocols to DMR Short Data Messages. The device has two serial ports for interfacing to a SCADA Server for and one IP Port.

Each of the serial ports can be configured independently for protocols such as Modbus, DNP3 and more. For each of these ports, a routing table and IP Reference table will be used to route the received serial data over the DMR infrastructure as a Short Data Message to the outstation (s).

All port parameters are configured using the embedded Web Browser and each of the two ports can be used individually for different applications if necessary.

### Benefits

- Easily configured web server embedded for use with PC or Mac
- Data compression
- Protocol based individual routing
- Redundant power supply
- Redundant radio infrastructure connection



# Specifications

## Pulse Gateway



### Specifications DGW-Rack (19")

<b>Function</b>	19" Rack for DGW-100R with redundant power supply
<b>Power Supply</b>	Two separate mains connector plugs
<b>Input Power Range</b>	90-240 VAC
<b>Indicators</b>	Front panel LED indication "power"
<b>Output Power</b>	18 Watt (Each device)
<b>Enclosure</b>	Rack mountable
<b>Rack Height</b>	4RU
<b>Operating Temperature</b>	-20 ° C to +60 ° C
<b>Indicators</b>	Front panel LED indication for all interfaces and connection status to the DMR infrastructure

### Specifications DGW-100

<b>Functions</b>	Gateway for connecting serial based equipment directly to a DMR infrastructure for communication with DMR Air Pro and/or ELITE outstations
<b>Interfaces; COM AUX Ethernet</b>	RS-232 Sub-D (F) RS-232 Sub-D (F) 10/100 Mbit/s
<b>Operating Modes</b>	SDM-based data communication
<b>Protocols</b>	MODBUS-RTU, MODBUS/IP, ROC, IEC-60870-5-101, IEC-60870-5-104, DNP3, DNP3/IP, PakBus, BSAP, Custom Protocols
<b>Operating Temperature</b>	-20°C to +60°C

UKHQ

Field House  
Uttoxeter Old Road  
Derby  
DE1 1NH  
Tel UK: 08717 411 050  
Tel International: +44 (0) 1332 375 500  
customer.service@simocowirelessolutions.com

AUSHQ

1270 Ferntree Gully Rd  
Scoresby, VIC 3179  
Tel: +61 (0) 3 9730 3999  
Fax: +61 (0) 3 9730 3964  
vic@simocowirelessolutions.com

AMERICAS

1835 E. Hallandale Beach Blvd.  
Hallandale Beach  
FL 33009, USA  
americas@simocowirelessolutions.com

# simoco

wireless solutions