

Simoco Xd Management Software comprises a rich suite of applications to manage the infrastructure products by bringing fully integrated network management facilities to DMR communications networks.

Simoco Xd Management Software is a range of PC-based tools designed to configure and manage Simoco Xd Infrastructure. Building on experience gained in developing IP connected radio communications systems, Simoco Xd brings end-to-end digital communications to business and mission critical radio networks.

Native IP connectivity brings the ability to remotely monitor and update all aspects of the system minimising down time and reducing site visits.

SIMOCO DIAGNOSTIC MONITOR

The Simoco Diagnostic Monitor allows real time monitoring of the status of a Simoco Xd DMR repeater.

Features

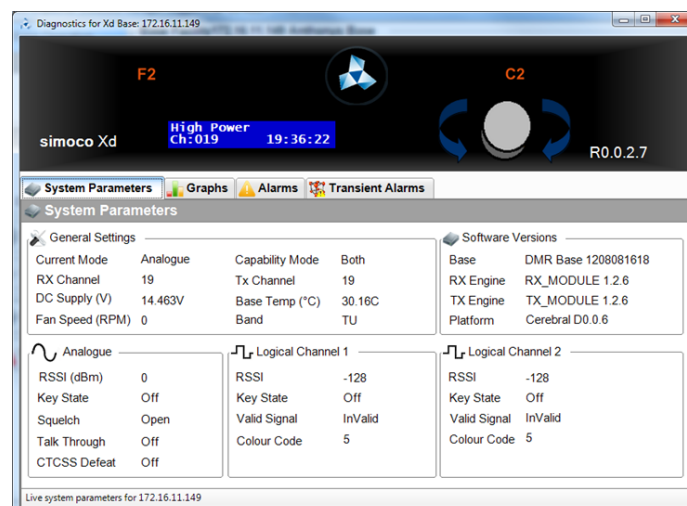
- Graphical display
- Transmit power monitor
- Display cooling fan speed
- Received signal strength indicator
- Monitor repeater call activity
- Check software version

Benefits

- Real time monitoring of repeater status from SDMT or Command Monitor
- Bring the front panel indicators of any Simoco Xd base station onto a PC monitor using the graphical display
- Instantly assess the severity of base station alarms
- Check performance in analogue and digital operating modes

Minimum PC Requirements

- Windows 10 Professional 64 bit operating system
- 2 gigahertz (GHz) 64-bit (x64) processor
- 2 GB RAM (64-bit)
- 150 GB available hard disk space
- DirectX 9 graphics device with WDDM 1.0 or higher driver
- 1024 x 768 monitor
- Ethernet port and USB port



IP CONFIGURATION TOOL

Essential for both system configuration and field support scenarios. The IP Configuration Tool is a utility that is used to set and edit the IP configuration parameters of Simoco Xd DMR repeaters.

Features

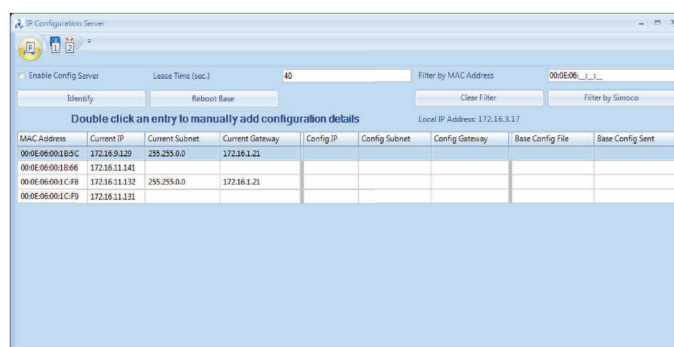
- Set IP address
- Set subnet mask
- Set gateway IP address
- Set broadcast IP address
- Base identity
- IP configuration discovery

Benefits

- Remotely configure Simoco Xd base stations via IP
- Discover the IP Configuration of a previously configured base station
- Store and manage IP configuration files for multiple base stations using .csv files
- Quickly locate a specific base in an equipment room using base identity

Minimum PC Requirements

- Windows 10 Professional 64 bit operating system
- 2 gigahertz (GHz) 64-bit (x64) processor
- 2 GB RAM (64-bit)
- 150 GB available hard disk space
- DirectX 9 graphics device with WDDM 1.0 or higher driver
- 1024 x 768 monitor
- Ethernet port and USB port



COMMAND MONITOR

The Simoco Xd Command Monitor enables system supervisors and maintainers to interrogate and analyse system alarm records.

Features

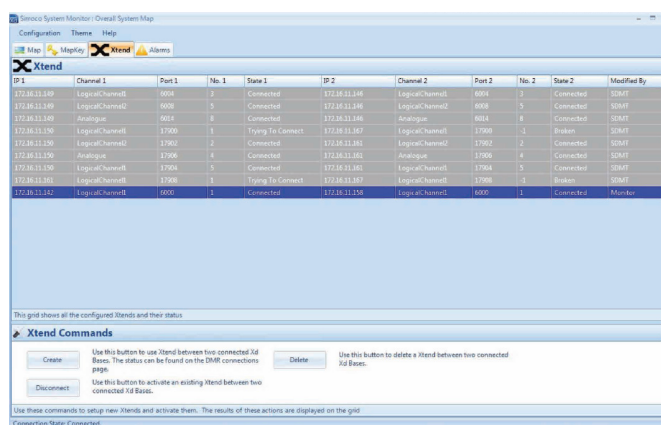
- Real time monitoring of system status
- Review of historical alarm data
- Access to the Simoco Diagnostic Monitor application
- Alarm logging
- Reporting via SNMP traps
- Alarm database maintenance
- Xtend setup

Benefits

- Comprehensive monitoring of the Simoco Xd radio system whatever its size
- Integration of Simoco Xd with third party network management suites using Simple Network Management Protocol (SNMP)
- Remote management system alarms down to individual base station level
- Configurable system map presents operators with a graphical representation of the radio system

Minimum PC Requirements

- Windows 10 Professional 64 bit operating system
- 2 gigahertz (GHz) 64-bit (x64) processor
- 2 GB RAM (64-bit)
- 150 GB available hard disk space
- DirectX 9 graphics device with WDDM 1.0 or higher driver
- 1024 x 768 monitor
- Ethernet port and USB port



SIMOCO DIGITAL MANAGEMENT TERMINAL

The Simoco Digital Management Terminal (SDMT) is a comprehensive Network Management Terminal that is used to configure and manage Simoco Xd infrastructure. IP connectivity allows either local or remote operation.

Features

- Configuration of Tier II and Tier III systems
- Base station programming
- Subscriber management
- Channel lists
- Event actions
- SIP trunk configuration
- Base station software upgrade

Benefits

- Full control of all Simoco Xd base station parameters
- IP Connectivity allows remote configuration of a base station no matter where it is on the network
- System independence allows configurations to be created offline and verified before uploading
- Software upgrade facility enables remote updating of Simoco Xd base stations either individually or in groups
- Wide selection of configurable event actions to tailor the radio system to individual user needs
- Employment of user roles provides system security and prevents unauthorised editing of critical system parameters
- Connects direct to the Simoco Xd network. No additional hardware interface is required

Minimum PC Requirements

- Windows 10 Professional 64 bit operating system
- 2 gigahertz (GHz) 64-bit (x64) processor
- 2 GB RAM (64-bit)
- 150 GB available hard disk space
- DirectX 9 graphics device with WDDM 1.0 or higher driver
- 1024 x 768 monitor
- Ethernet port and USB port

